

Innovations in Cancer Care: Practical Tools for Your Practice

OVERVIEW

Keynote discussion topics:

- The Value Proposition in Oncology
Yousuf Zafar, M.D.
- Ethical Considerations in Palliative Care
Andrew Esch, M.D.
- Hereditary Cancer Risk Assessment in the Era of Multigene Panel Testing
Dana Zakalik, M.D.

OBJECTIVES

- Assess current treatment options, and evaluate new evidence-based cancer care measures
- Recall and discuss the guidelines for cancer screening
- Formulate treatment options for those who need therapy
- Explain updated screening guidelines and management of cancer patients to primary physicians
- Summarize innovative techniques for cancer treatment

ACCREDITATION

Beaumont Health is accredited by the Accreditation Council for Continuing Medical Education (ACCME) to provide continuing medical education for physicians.

Beaumont Health designates this live activity for a maximum of 5.25 AMA PRA Category 1 Credit(s)[™]. Physicians should claim only the credit commensurate with the extent of their participation in the activity.

REGISTRATION/
CME QUESTIONS:



CALL 248-551-0748 OR
cme@beaumont.edu

GENERAL EVENT QUESTIONS:
CALL 248-551-5264

Non-physician professionals should check with their individual credentialing bodies to confirm that participation in this CME activity will be approved for credit. CME credits can be used to meet the continuing education requirements needed for Michigan physician assistant and nursing relicensure without limitation.

TARGET AUDIENCE

Primary care and specialty physicians, physician assistants, nurse practitioners, nurses, fellows, residents, medical students and other health professionals including those clinicians who practice general medicine, geriatrics, emergency medicine, neurology, gynecology, pathology, pediatrics, radiology, radiation oncology, surgery, urology, dermatology and medical oncology.

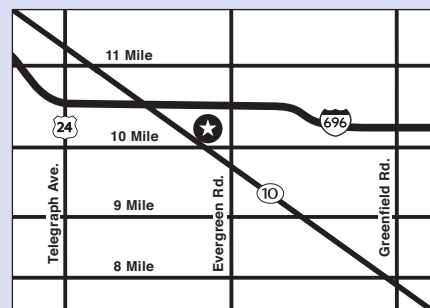
DISCLOSURE STATEMENT

All speakers and planning committee members have been asked to disclose any relevant relationships they may have with commercial interests. The presence or absence of relationships as well as off label discussion of products will be disclosed at the time of the meeting.

HOTEL INFORMATION

Please visit the conference website for detailed driving and parking directions.

<https://beaumont.cloud-cme.com/oncologysymposium>



Westin Southfield
1500 Town Center
Southfield, MI 48075

NON-PROFIT ORG
U.S. POSTAGE
PAID
PERMIT NO. 404
ROYAL OAK
MICHIGAN

Beaumont Health
Oncology Services, Suite 210
3601 West 13 Mile Road
Royal Oak, MI 48073

4th Annual Beaumont
Interdisciplinary Oncology Symposium
Innovations in Cancer Care
Practical Tools for Your Practice

Friday, Oct. 19, 2018 • 7 a.m. to 2:30 p.m.

Westin Southfield
1500 Town Center
Southfield, MI 48075

<https://beaumont.cloud-cme.com/oncologysymposium>



P12164eL_19643_073118

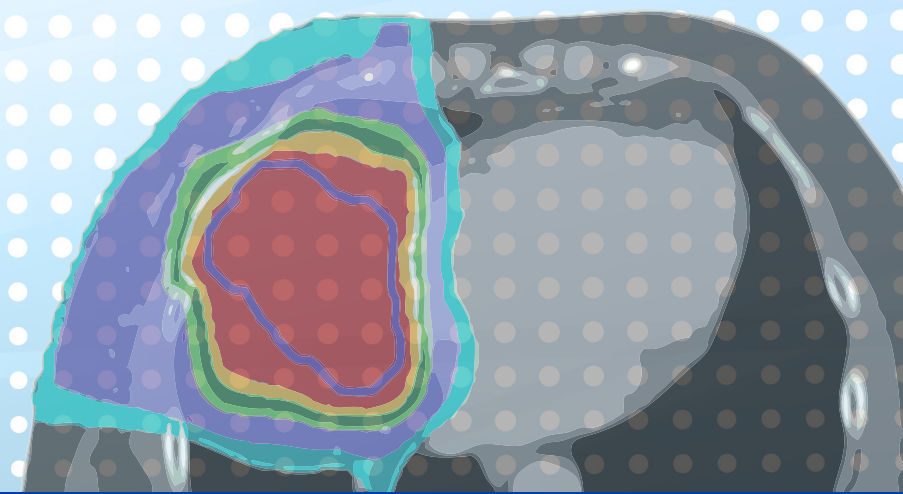
PRIMARY CARE TRACK AVAILABLE THIS YEAR

4th Annual Beaumont Interdisciplinary
Oncology Symposium

Innovations in Cancer Care

Practical Tools for Your Practice

Friday, Oct. 19, 2018
7 a.m. to 2:30 p.m.



Westin Southfield, 1500 Town Center, Southfield, MI 48075

Beaumont

Innovations in Cancer Care: Practical Tools for Your Practice

GUEST FACULTY

**Andrew Esch, M.D. • Terry Sarantou, M.D. • Debu Tripathy, M.D.
Antoinette Wozniak, M.D. • Yousuf Zafar, M.D.**

ACTIVITY CO-DIRECTORS

Majd Aburabia, M.D.

Breast Surgeon, Beaumont Hospital, Dearborn

Nayana Dekhne, M.D.

Assistant Professor, Surgery, Oakland University William Beaumont (OUWB) School of Medicine

Director, Breast Clinic Fellowship

Surgical Services, Beaumont Hospital, Royal Oak

Kenneth Kernen, M.D.

Associate Professor, Urology, OUWB School of Medicine

Director, Urology

Director, Research, Michigan Institute of Urology, Beaumont Hospital, Royal Oak

Lynda Mosed-Vogel, M.D.

Medical Director, Colorectal Cancer Multidisciplinary Clinic, Beaumont Hospital, Troy

Section Chief of Colon and

Rectal Surgery

Amy Seger, M.D.

Assistant Professor, Family Medicine and Community Health, OUWB School of Medicine

Director, Ambulatory Education and Recruitment, OUWB School of Medicine
Family Medicine, Beaumont Hospital, Troy

Harry Wasvary, M.D.

Associate Professor, Surgery, OUWB

Medical Director, Colorectal Cancer Multidisciplinary Clinic, Beaumont Hospital, Royal Oak
Chair, Colon & Rectal Surgery Associate Professor, Department of Surgery

Robert Welsh, M.D.

Vice Chief, Surgical Services
Quality, Safety and Outcomes

Section Head, Thoracic Surgery, Beaumont Hospital, Royal Oak

**For a complete list of Beaumont Faculty and the Planning Committee please visit:
<https://beaumont.cloud-cme.com/oncologysymposium>**

VISIT OUR WEBSITE TODAY TO REGISTER ONLINE
and to see upcoming events:
<https://beaumont.cloud-cme.com/oncologysymposium>

REGISTRATION/CME QUESTIONS:
248-551-0748 or cme@beaumont.edu

GENERAL EVENT QUESTIONS: **248-551-5264**

Agenda changes are possible between the time
of this printing and the live activity.

Beaumont

AGENDA OCT. 19, 2018

7-7:30 a.m.	Registration and breakfast
7:30-7:40 a.m.	WELCOME ADDRESS Kenneth Kernen, M.D.
7:45-8:30 a.m.	KEYNOTE SPEAKER Yousuf Zafar, M.D. The Value Proposition in Oncology
8:35-9:20 a.m.	KEYNOTE SPEAKER Andrew Esch, M.D. Ethical Considerations in Palliative Care
9:25-10:10 a.m.	KEYNOTE SPEAKER Dana Zakalik, M.D. Hereditary Cancer Risk Assessment in the Era of Multigene Panel Testing
10:10-10:25 a.m.	Break
10:25 to noon	MORNING BREAKOUT SESSIONS (see sessions at right)
Noon to 12:45 p.m.	Lunch
12:45-2:20 p.m.	AFTERNOON BREAKOUT SESSIONS (see sessions at right)

Register online – <https://beaumont.cloud-cme.com/oncologysymposium>

	Early bird rate (ends 9/19/18)	Regular rate (9/20/18-10/15/18)	Onsite rate (10/19/18)
Physician	\$100	\$125	\$150
Beaumont health care professional (HCP)	\$55	\$90	\$125
Non-Beaumont HCP	\$100	\$125	\$150
Beaumont resident/fellow/student	Fee waived	Fee waived	\$50
Non-Beaumont resident/fellow/student	\$50	\$75	\$100

Online registration will be open through Oct. 15, 2018. After this date all registrations must be done onsite on the day of the event. Please note that cash cannot be accepted.

Cancellations or requests for refunds must be received by Oct. 15, 2018, and will be refunded less a \$25 processing fee. Cancellation or refund requests after that date will not be honored. To cancel a registration, please send an e-mail to cme@beaumont.edu and include "Interdisciplinary Oncology Registration Cancellation" in the subject.

MORNING BREAKOUT SESSIONS

	PRIMARY CARE Director: Amy Seger, M.D.	BREAST Directors: Nayana Dekhne, M.D. Majd Aburabia, M.D.	COLORECTAL Directors: Harry Wasvary, M.D. Lynda Mosed-Vogel, M.D.	LUNG Director: Robert Welsh, M.D.
10:25–11:10 a.m.	Update on GYN Cancer Screening Brian Torok, M.D.	Management of Lymph Nodes Terry Sarantou, M.D.	Short vs. Long Course Radiation Therapy for Rectal Cancer John Robertson, M.D.	Innovative Endoscopic Modalities and Stage Lung Cancer Phillip Kaplan, M.D.
11:15 a.m. to noon	Endocrine-Related Tumors Farah Dawood-Farah, M.D.	Updates in Radiation Therapy for Breast Cancer Saada Jawad, M.D.	Best Practices For Perioperative Care of the Colon/Rectal Cancer Patient Michelle Mosed-Vogel, M.D. Drips, Drops and Blops: The Role of a Pelvic Health Physical Therapist Kristen Maike, PT, WCS	Radiation Oncology: Proton and Present State of Radiosurgery Inga Grills, M.D.

AFTERNOON BREAKOUT SESSIONS

	PRIMARY CARE Director: Amy Seger, M.D.	BREAST Directors: Nayana Dekhne, M.D. Majd Aburabia, M.D.	COLORECTAL Directors: Harry Wasvary, M.D. Lynda Mosed-Vogel, M.D.	LUNG Director: Robert Welsh, M.D.
12:45–1:30 p.m.	Integrative Medicine: Therapeutic Approach to Oncology Patients Michael Walker, N.D.	Updates in Breast Imaging Lori Joy Gallardo, M.D.	Rectal Cancer Patients Who Have "Completely" Responded to Neoadjuvant Therapy: "What's Next?" Harry Wasvary, M.D.	Surgery: Robotics and Minimally Invasive Surgery James Fenton, M.D.
1:35–2:20 p.m.	GI Cancer Screening Guidelines Anzei Bakken, M.D.	Medical Oncology Debu Tripathy, M.D.	Advances in Molecular and Targeted Therapy in Colorectal Carcinoma George Howard, M.D.	Immunotherapy: A Cure for Lung Cancer? Antoinette Wozniak, M.D.